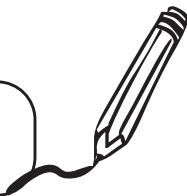


NOMBRE:



DÍA	MES	AÑO

DÍA	MES	AÑO

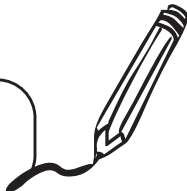
NOMBRE:



A large rounded rectangular area enclosed by a dashed line, containing ten sets of primary writing lines. Each set consists of a solid top line, a dashed midline, and a solid bottom line, providing a guide for letter height and placement.

DÍA	MES	AÑO

NOMBRE:



Handwriting practice area with a large dashed outline and five sets of horizontal lines (dotted top and bottom, solid middle).

NOMBRE:

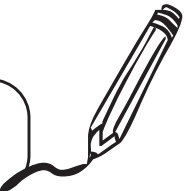


DÍA	MES	AÑO

A large rectangular area filled with a fine grid of small squares, intended for calculations or drawing. The grid is enclosed within a dashed-line border that follows the overall shape of the page's content area.

DÍA	MES	AÑO

NOMBRE:



A large grid for calculations, enclosed in a dashed-line border. The grid is 18 columns wide and 20 rows high. At the bottom center of the grid area, the text barajasdecalculo.com is written.

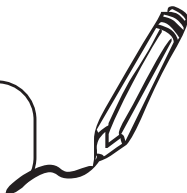
DÍA	MES	AÑO

NOMBRE:



A large dashed-line border enclosing a central grid. The grid consists of 20 horizontal rows and 20 vertical columns, providing a space for calculations or drawing.

NOMBRE:



DÍA	MES	AÑO

A large grid for calculations, enclosed in a dashed border. The grid consists of 15 rows and 15 columns. The top row is slightly wider than the others, suggesting it might be for a title or a specific type of calculation. The rest of the grid is a standard 14x15 grid of squares.